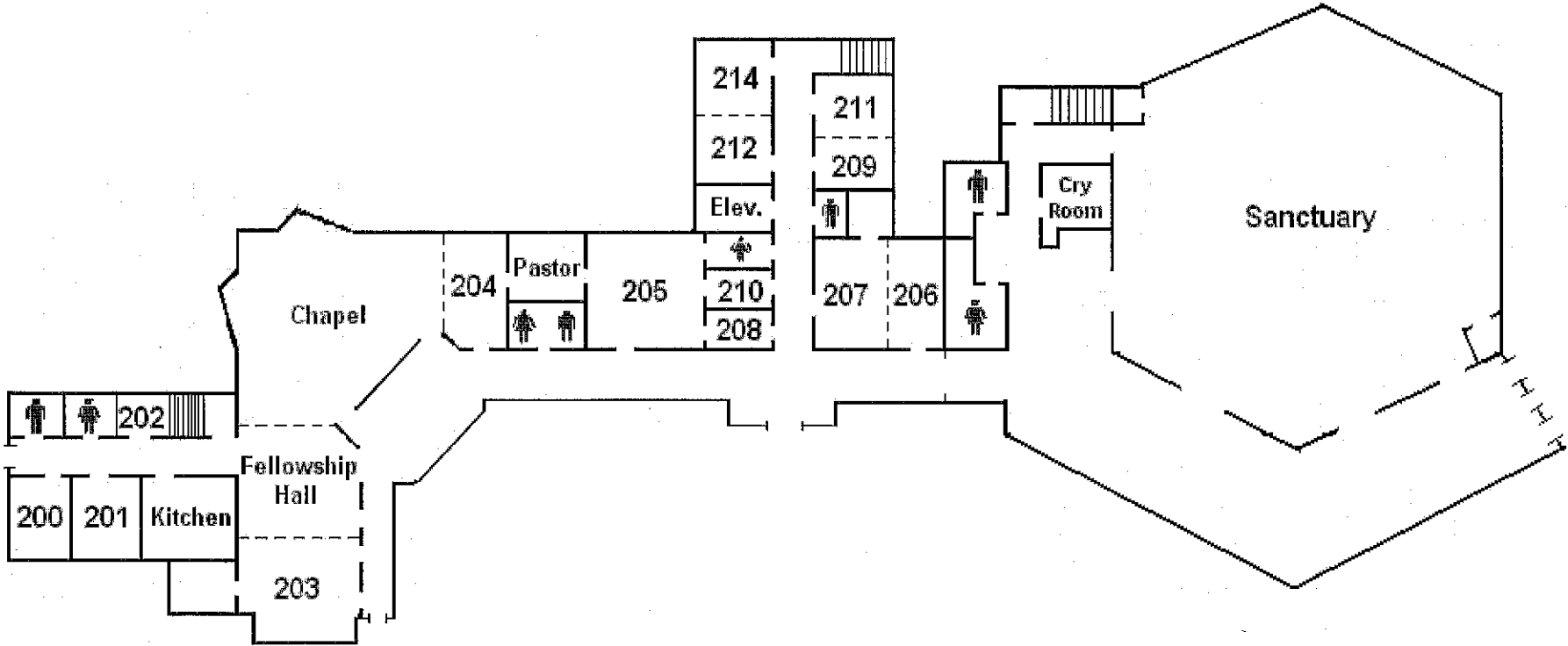


# Christ United Methodist Church Main Level

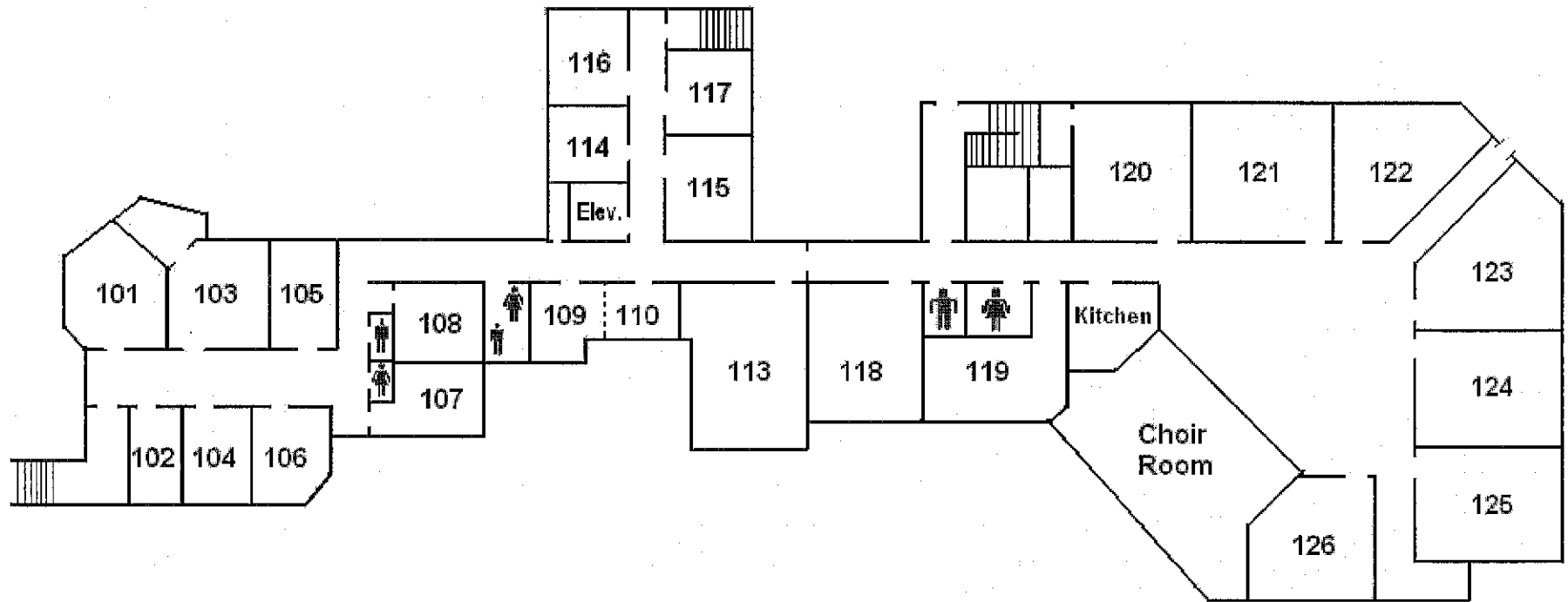


- 200 – Storage
- 201 – Inquirer’s Class
- 202 – Prayer Room
- 203 – Faith in Action
- 204 – Thinking and Believing

- 205 – Church Office
- 206 – Bible Class
- 207 – Open Door Class
- 208 – John Hill
- 210 – Nancy Speas Hill

- 209 – Youth
- 211 – Youth
- 212 – Youth Office  
(Paul and Doug)
- 214 – Youth

# Christ United Methodist Church Lower Level



101 – Circle of Faith  
 102 – Bible 102  
 103 – Acts 2 Fellowship  
 104 – Faith Forward  
 105 – Journey Class  
 106 – Wesley Circle  
 107 – Education Office/Supplies  
 108 – Young Adults

109 – Open  
 110 – Open  
 113 – Journey of Faith (Kid's Supplies)  
 114 – 3-Year Olds  
 115 – Storage  
 116 – 2-Year Olds  
 117 – 4-Years Olds  
 118 – Kindergarten

119 – 1<sup>st</sup> Grade  
 120 – 2<sup>nd</sup> Grade  
 121 – Children's Worship  
 122 – Nursery  
 123 – 3<sup>rd</sup> & 4<sup>th</sup> Grade  
 124 – 5<sup>th</sup> Grade  
 125 – 6<sup>th</sup> Grade  
 126 – Older Childcare Room